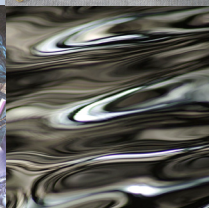
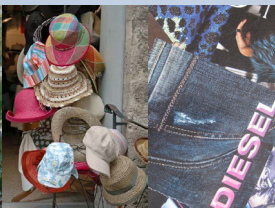


The Art Cell

Caversham Artists are back



The Art Cell

Caversham Artists are back

Caversham Artists return with a mixture of sculpture, painting, pottery, jewellery, photography, silhouette work, decoupage, and woodwork.

A showcase and sale of work by Anne Webster, Barbara Goodbun, Charles Burns, Joanne de Nobriga, Louise Spiers, Mary Phelan, Nicola Duncan, Julie Simmonds, Roger Smalley, and Peter Quarmby.

43c Peach Street, Wokingham, RG40 1XJ

Thursday 11th November - Saturday 20th November
12-5pm Monday-Friday and 10:30am-5pm Saturdays

Join the artists for a celebratory late night opening on **Thursday 11th November 5-8:30pm**. Be the first to enjoy the exhibition and meet the artists over a glass of wine.

www.cavershamartstrail.co.uk

This exhibition is part of the 'more arts' campaign, bringing more arts to the Wokingham Borough. Empty shop exhibitions across the Borough are co-ordinated by local charity The Cultural Partnership. To find out what's on, or to get involved visit www.morewokingham.org.uk

Flyer design by Jen Wood - www.jennywood.biz

The Cultural Partnership
registered charity no. 1129471

www.morewokingham.org.uk



WOKINGHAM
BOROUGH COUNCIL